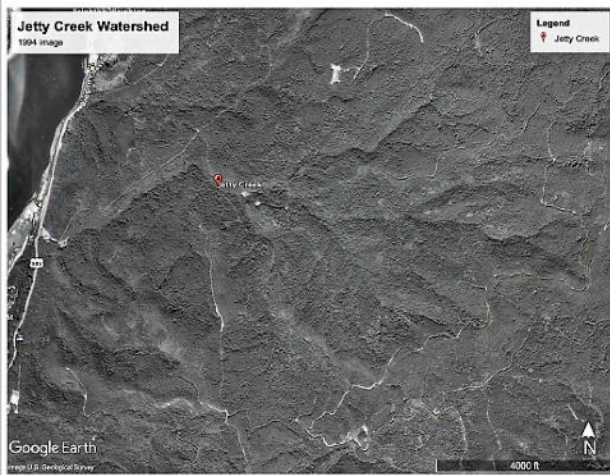


# JETTY CREEK 1994 TO 2022

## SOURCE OF DRINKING WATER FOR THE TOWN OF ROCKAWAY BEACH, OREGON

1994



Jetty Creek watershed is 2.1 sq. miles or 1344 acres.

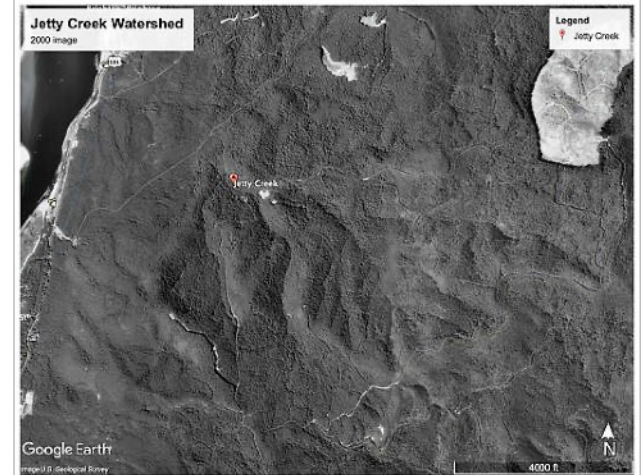
\*\*\*\*\*

In 1994, Note intact watershed and the lack of both roads and clearcuts

\*\*\*\*\*

In 2000, the single clearcut in the upper right corner is mainly outside of the Jetty Creek Drainage. It serves as a useful marker in the next images.

2000



2003



Clearcut Logging Begins

\*\*\*\*\*

In 2002, Oregon's Department of Environmental Quality identified clearcut logging as potential sources of contamination of Rockaway Beach drinking water. Clearcuts in 2002 were estimated at over 400 acres, still more were done by 2005.

2005



## 2011

### Many more clearcuts by Stimson Lumber and Olympic Resources by 2011.

Very little intact forest left. 500 acres clearcut in Jetty Creek since 2006. Forest cover reduced 428 acres, 54% less than in 2006. (from Basu presentation, National Land Cover Database)



The red letters **W** and **S** show locations for the images in the next row. The **W** is to the left of an area of freshly logged wetland. The 3/2021 image included below, shows that area today. The **S** is next to a tributary of Jetty Creek and in the clearcut that produced the sediment documented in the 12/2020 photo (see below here).

### Wetland logged 2011, in 3/2021 photo

Note significant number of Skunk Cabbage (yellow dots), a wetland plant shown in image to the right.



### Impacts from 2011 logging (Photo below of Skunk cabbage from wetland)



### Sediment from 2011 cut, in 12/2020 photo (Future drinking water contamination)



© 2024 Trygve Steen

2012



2013



2014



2016, view East from Red O



2016

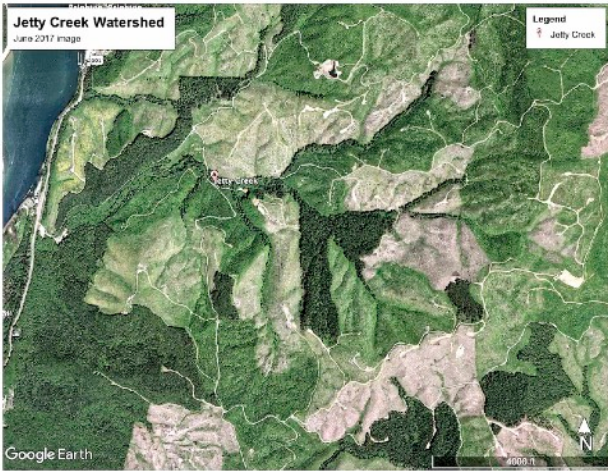


2016, Southwest from red O



© 2024 Trygve Steen

**2017**



The prominent area of forest in the middle of the 6/17 satellite image is the area that will be logged in 2020-2021, as the “Olympic Line” operation.

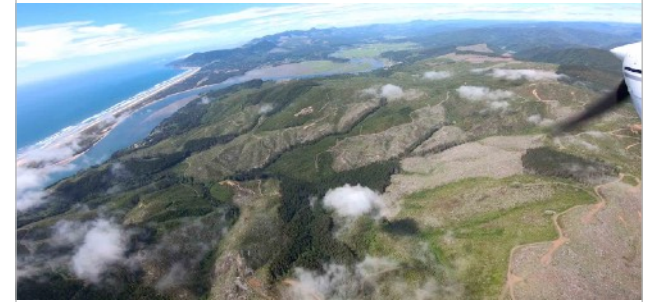
\*\*\*\*\*

This “Olympic Line” area is visible among the clouds in the lower portion of the 2019 oblique aerial to the right.

\*\*\*\*\*

Both “Olympic Line” and “Crossover Salvage” were clearcut 2021

**2019** LightHawk flight

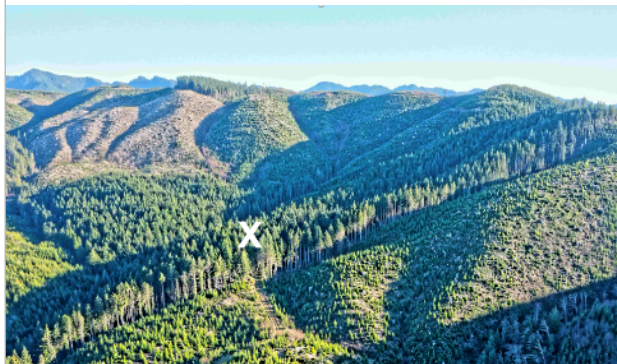


Dark propeller points at “Crossover Salvage” area. 2021 image of actual logging, is three rows below.

Wide range of tree sizes in "Olympic Line" (see X to right & mid image 3/2021 below)

**Olympic Line 2020 BEFORE** aerial

Steep slope above Jetty Creek, western fork, in area of later severe blowdown



© 2024 Trygve Steen

Eastern part, Creeks both sides



Olympic Line 1/2021 AFTER logging



Steep Slope above Jetty Creek, western fork



Remains of slash burn pile in eastern part of "Olympic Line" logged area 8/2022



Crossover Salvage (top) showing active logging & Struggling Cut (below) 1/2021



Blowdown in above area, supplies turbidity to Jetty creek, just below in image (5/2021)



© 2024 Trygve Steen

Eastern portion of Olympic line in foreground and upper western portion right background



Western Portions **3/2021** Olympic Line (X shows site of tree size image 3 rows up)



Upper western drainages, blowdown area in lower left "buffer", photos in row below



Lower part of western drainage, major blowdown area just above Jetty Creek tributary 8/2022



Western drainage, STEEP SLOPE blowdown area just above Jetty Creek tributary, 8/2022 photo



Blowdown Area in Stream Buffer that is lower part of above buffer. One third each - full blowdown, broken top trees, & intact trees, 8/2022 photo



© 2024 Trygve Steen

Panorama of Upper Jetty Creek Watershed  
before Olympic Line Clearcuts, 12/2020



© 2024 Trygve Steen

## JETTY CREEK, AT LEAST 80% CLEARCUT IN THE LAST 19 YEARS



Panorama of Upper Jetty Creek Watershed  
after Olympic Line Clearcuts 01/2022

© 2024 Trygve Steen